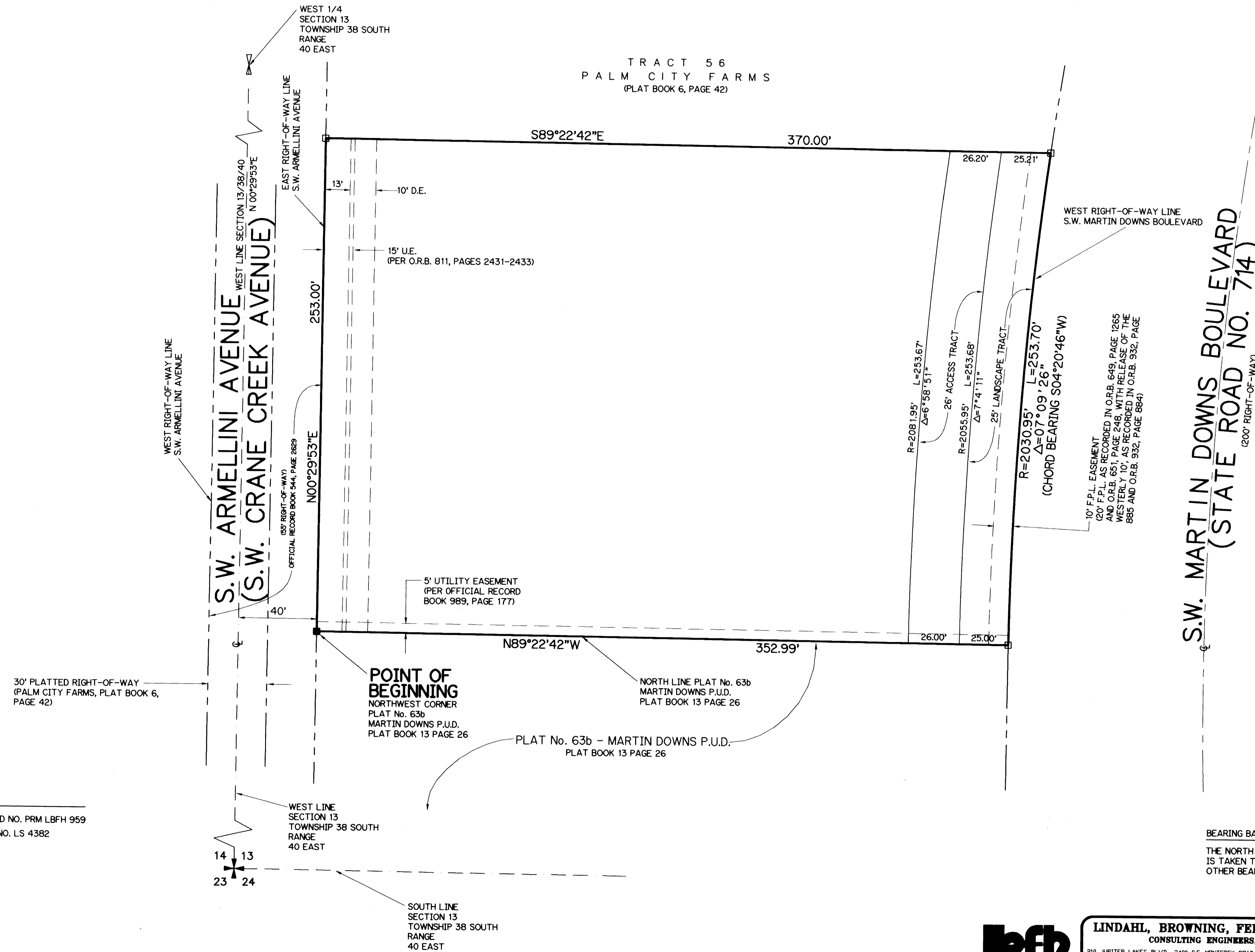
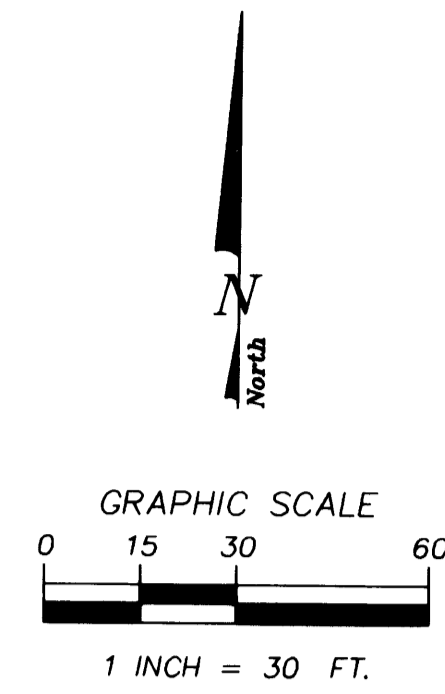


A PLAT OF FAMILY FUN CENTER

PLAT NO. 67 MARTIN DOWNS P.U.D.
BEING A REPLAT OF A PORTION OF TRACT 56, PALM CITY FARMS
AS RECORDED IN PLAT BOOK 6, PAGE 42
PUBLIC RECORDS OF PALM BEACH (NOW MARTIN) COUNTY, FLORIDA
LYING IN SECTION 13, TOWNSHIP 38 SOUTH, RANGE 40 EAST
MARTIN COUNTY, FLORIDA



LEGEND:

- - DENOTES P.R.M. (PERMANENT REFERENCE MONUMENT) FOUND NO. PRM LBFH 959
- - DENOTES P.R.M. (PERMANENT REFERENCE MONUMENT) SET NO. LS 4382
- U.E. - DENOTES UTILITY EASEMENT
- O.R.B. - DENOTES OFFICIAL RECORD BOOK
- D.E. - DENOTES DRAINAGE EASEMENT

BEARING BASE:

THE NORTH LINE OF PLAT No. 63b MARTIN DOWNS P.U.D. IS TAKEN TO BEAR NORTH 89° 22'42" WEST AND ALL OTHER BEARINGS ARE RELATIVE THERETO.



LINDAHL, BROWNING, FERRARI, & HELLSTROM, INC.
CONSULTING ENGINEERS, PLANNERS & SURVEYORS
210 JUPITER LAKES BLVD. SUITE 300 JUPITER, FL 33468 407-746-9248
2400 S.E. MONTEREY ROAD SUITE 300 STUART, FL 34996 407-286-3883
2222 COLONIAL ROAD SUITE 201 FT. PIERCE, FL 34950 407-461-2450
2000 PALM BEACH LAKES BLVD. SUITE 702 WEST PALM BEACH, FL 33409 407-684-3375